

NIDI(Non Invasive Diagnostic Imaging):Part 2, Seeing if there is cancer present, how much & where...(Using Lunapic.com free photo editor)



Added by [GroveCanada](#)
November 29, 2016, 6:42 pm → version: 1
Language: English
Average rating: by 0 user
Viewed: 89 times

14 [Tweet](#)
Like

0
G+1

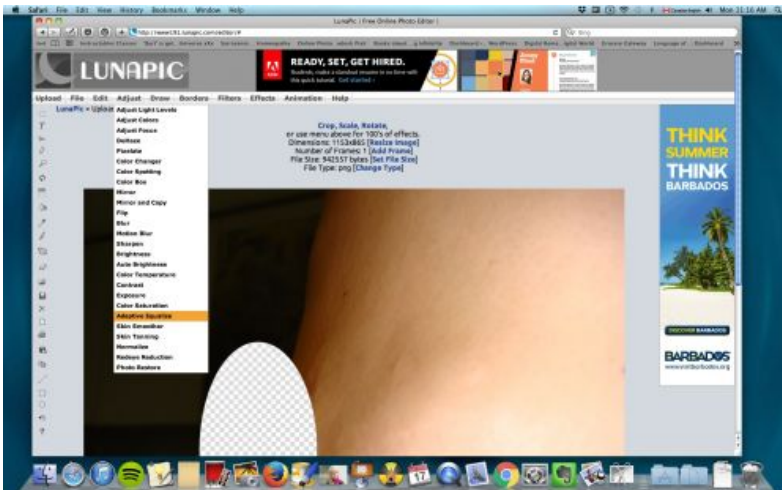


1



Take a picture & upload it to [Lunapic.com](#) (choose Browse, then find your pic in your computer or mobile device)...

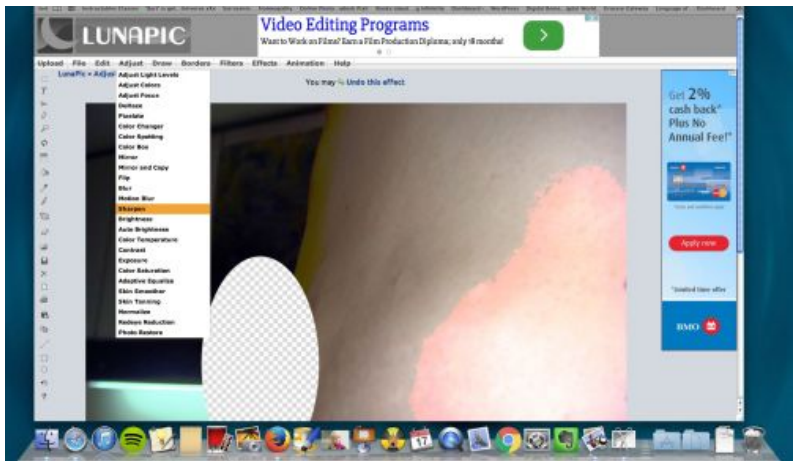
2



Choose Adaptive Equalize from the drop down menu called ADJUST...

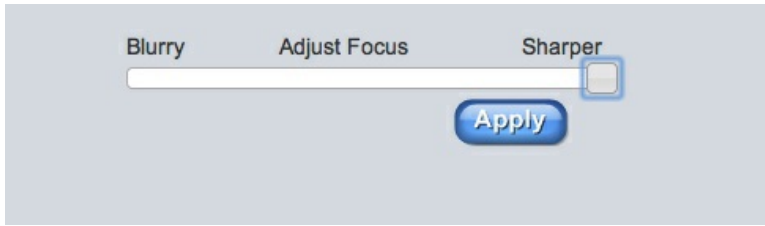
3





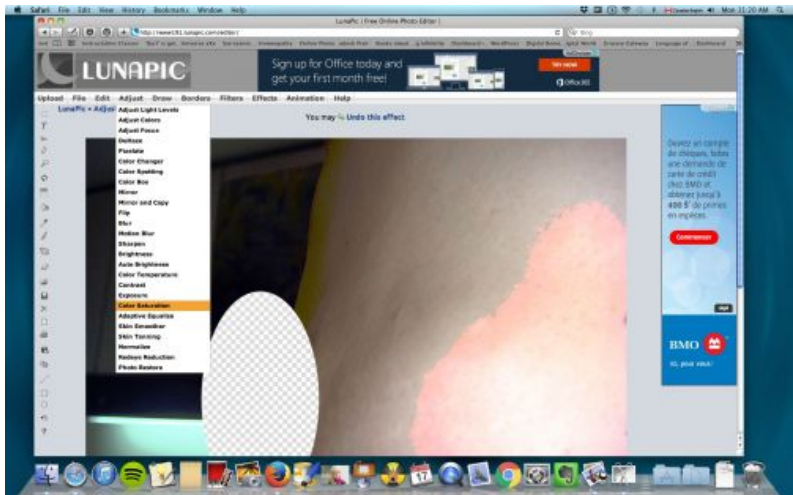
Choose Sharpen from the drop down menu called ADJUST...

4



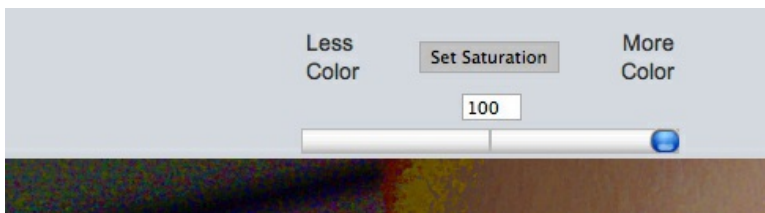
In SHARPEN slide the slider all the way to the right...On a mobile device, tap the slider at the far right to make it go there...click APPLY...

5



Choose COLOR SATURATION from the ADJUST menu...

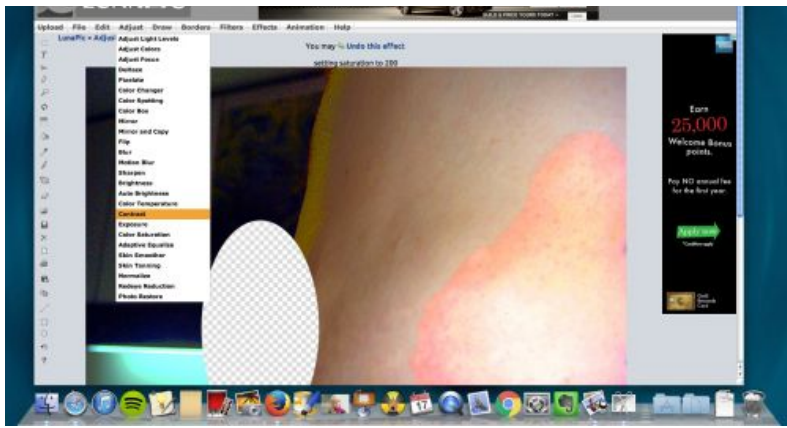
6



Move the slider all the way to the RIGHT...Or change the number in the box from 50 to 100...Click SET SATURATION when done...

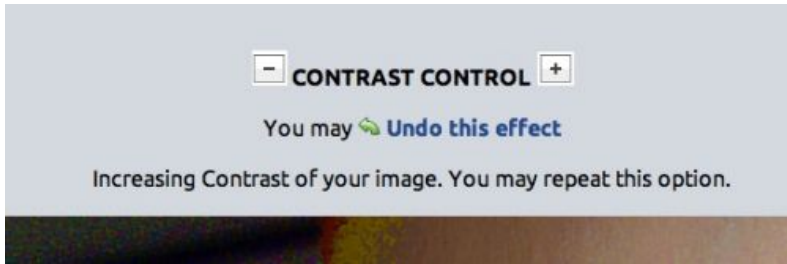
7





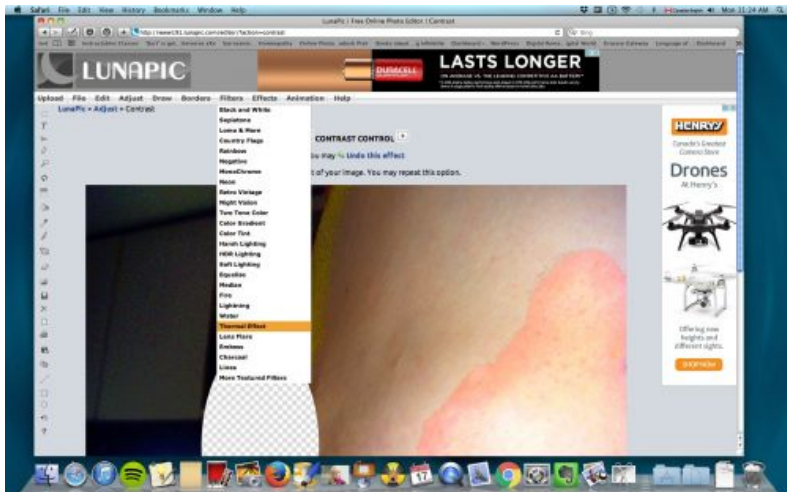
Choose CONTRAST from the ADJUST menu...

8



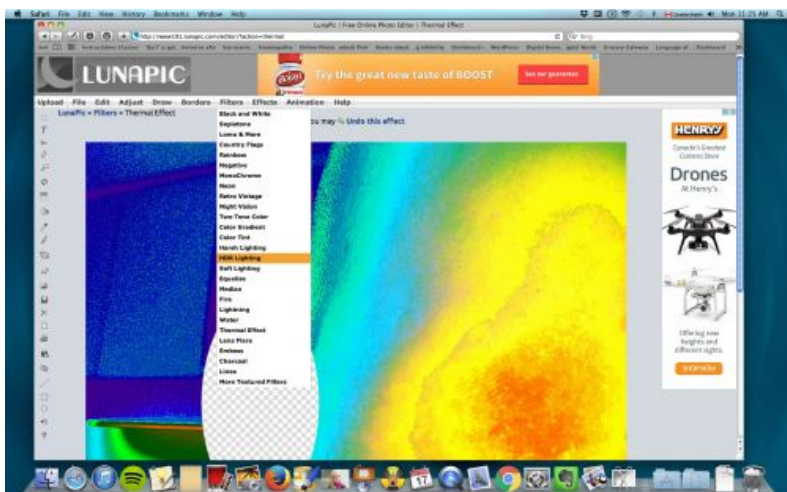
In CONTRAST, hit the + button 5 times in a row slowly...(wait for page to reload before hitting it again!!!)

9



Now go to FILTERS & choose THERMAL EFFECT from the drop down Menu...

10



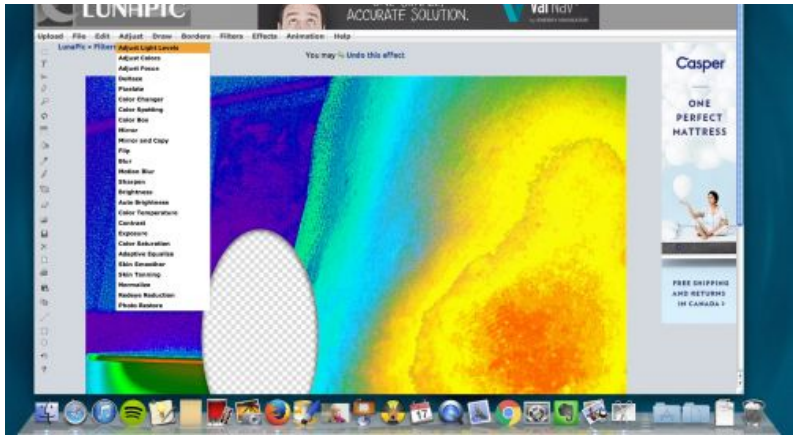
In FILTERS again, choose HDR LIGHTING from the dropdown menu...

11



Now go

11



back to

ADJUST & choose the first choice which is ADJUST LIGHT LEVELS...

12

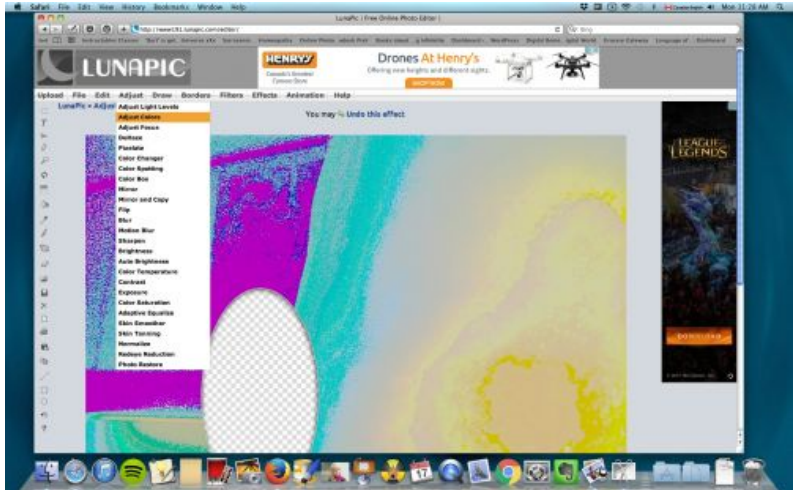


In Adjust Light levels there are 3 sliders...Slide all three, one at a time, slowly, to the LEFT...(on a mobile device, enlarge the picture, then TAP the bar at the far LEFT to make it go there)...

So Contrast, then Highlights, then Shadows, all the way to the LEFT please...

Click APPLY when done...(don't forget!)

13



Now in Adjust again, choose the second choice which is ADJUST COLORS...

14



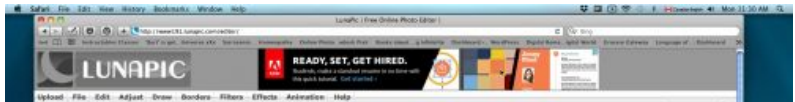
In Adjust Colors, you are going to click ALL THREE

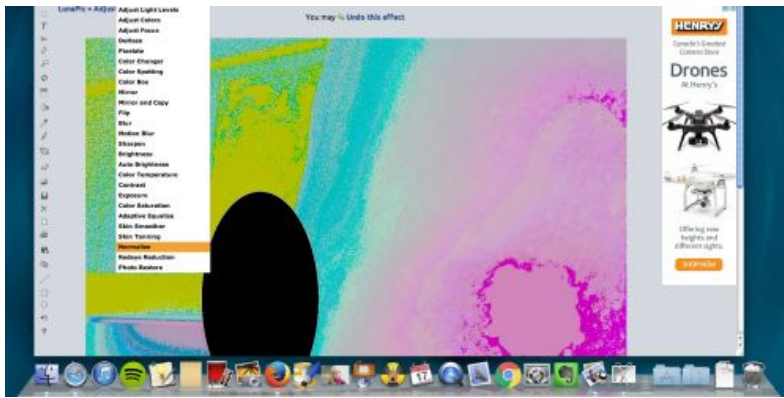
choices, slowly, one after another...

So click in SWAP COLORS Red & Green, then Green & Blue, then Blue & Red...

Click APPLY when done, don't forget!

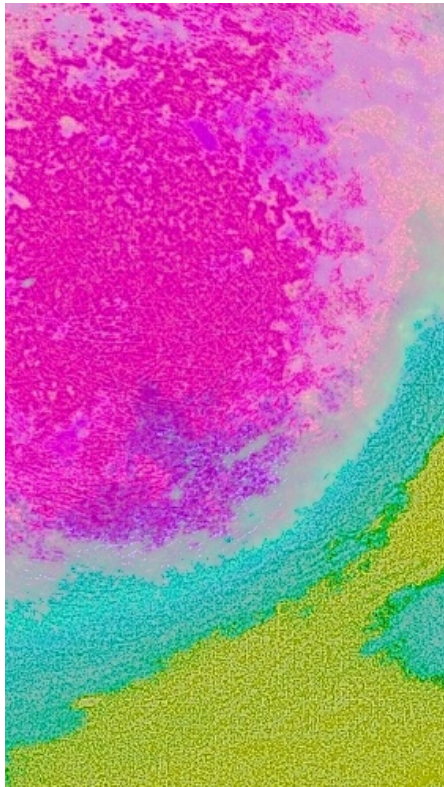
15





Last step!!! In ADJUST again, choose NORMALIZE...

16



The colour PURPLE in Lunapic is Phosphorus which is a Cancer marker...(not the pink!) See the purple area in this breast lump? That is where the cancer is...(a tumour is usually just a fraction cancer & the rest is nothing to worry about)...Also note:Cancer does not always sit on a tumour-sometimes it sits in a corner near to a tumour...That is normal...Don't always expect the purple to be right on a tumour area...(Very Pale purple or mauve indicates high Phosphorus levels & a pre-cancer stage...Many doctors just call this cancer too...)

17

That purple area, the Phosphorus responds well to the Copper family, which includes for example:

Eating Cilantro leaves

Eating Coriander seeds

Drinking coffee(like 6 cups a day)

Drinking tea(strong & more is better again)

Buy a bag of licorice root from a herb store online...Take 1/3 cup licorice root, simmer in 3 cups good water for 15 minutes or so, then drink daily...This will make the purple in your picture go away...You will be able to see it happen...When your lump is benign there will be no more purple in the picture...(I did this using licorice root by the way-other forms work too-capsules, tincture, just make sure it is very very strong daily...Not the dilute tea bags type of thing...This is medicine, not for taste sorry!)

Rating

What do you think about this tutorial ?

Comments

Like 14 people like this. [Sign Up](#) to see what your friends like.

Other tutorials from this author

- [Getting rid of a breast Cancer lump...](#)
- [A new way to understand how the human machine works...\(& thus be able to repair it when things go wrong!\)](#)